

PROJECT SNAPSHOT

Project Name:
EX008 Shutdown

Client:
Glencore

Date:
June 2021

Machine/Equipment:
Terex RH340 Excavator

Our Team

63 people

Man Hours Worked

**4758.5
hours**

FMS Group Project Value

**\$ >800
thousand**

Safety

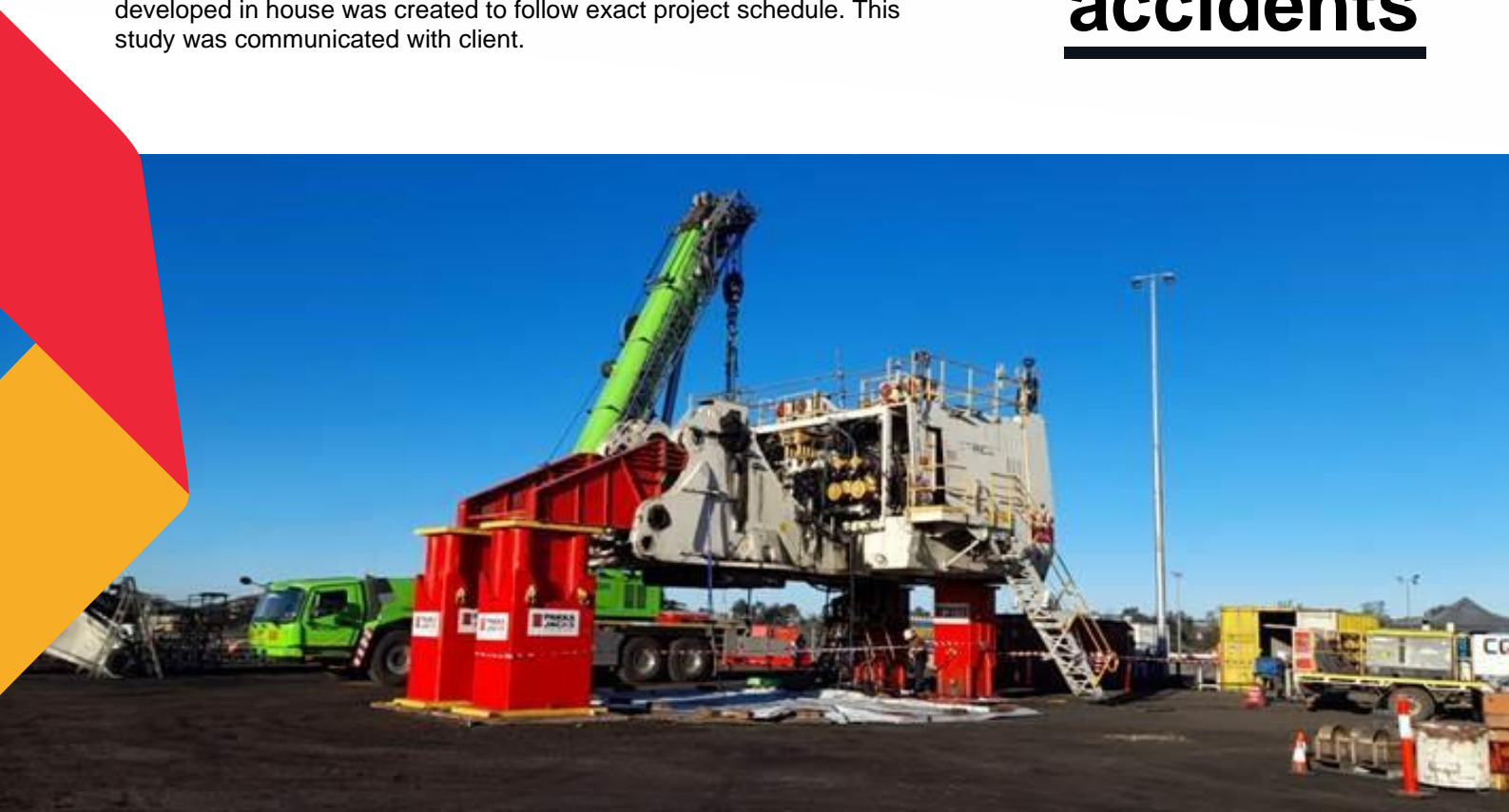
**zero
incidents/
accidents**

CQFMS was engaged to deliver skilled trade labour, tooling, excavator jacking system and hydraulic motivator for a planned major shutdown on EX008 excavator at Hail Creek mine.

PROJECT CHALLENGES

We were able to overcome the few challenges that arose:

- Additional car body and track frame cracking was identified. The scope of work was adjusted to complete these emergent repairs.
- Mounting surfaces were worn and damaged bolt holes were discovered. Machining work was carried out to bring components back to OEM specification.
- The project was completed ahead of schedule despite rain delays.
- Client was unsure of jacking process, so an engineered jacking study developed in house was created to follow exact project schedule. This study was communicated with client.



THE BEST APPROACH

CQFMS took a meticulously planned approach to ensure the successful delivery of this major maintenance project. We outlined three work packs detailing alternative shutdown scenarios which included Gantt charts, estimates and crane cost analysis. The shutdown utilising excavator jacking system and hydraulic motivator was selected by the client.

Overall safety on this shutdown was tremendous, several site audits occurred with great feedback. Key leadership, housekeeping and pad layout was key to maintaining a hazard-free work environment.

Our responsiveness and shutdown plan meant that the downtime on this major piece of equipment was minimised, ensuring the ongoing productivity of the mine.

Skilled trade labour delivered to site including:

- Supervisors
- Fitters
- Boilermakers
- Auto Electricians
- Fitters

THE BEST RESULT

- This successful shutdown was executed incident free.
- The inclusion of the machine jacking and CQFMS Engineering support reduced machine downtime and shutdown costs.
- CQFMS adopted the Glencore permit system and made sure there was a plan in place to manage before execution was underway.
- All original and emergent work scope was completed within contract.
- The shutdown was well planned, supervised and executed and the Glencore representative on the outage managed the project efficiently.
- The effective modular replacement and jacking plan reduced crane costs and ensured mechanical work continuity while emergent work was being completed.

Delivering the Best to keep your mine running.

To find out how CQFMS can achieve a result like this for your mine, [contact us](#).

P +61 7 4952 6557
E enquiries@cqfms.com



fieldminingservicesgroup
cqfms.com.au