

PROJECT SNAPSHOT

Project Name:
Major Outage for MEX004

Client:
CITIC Pacific Mining

Site & Date:
Sino Iron - Cape Preston, October 2020

Machine/Equipment:
Terex RH400 Shovel

Our Team

40 people

Man Hours Worked

**14,088
hours**

FMS Group Project Value

**\$1.4
million**

Safety

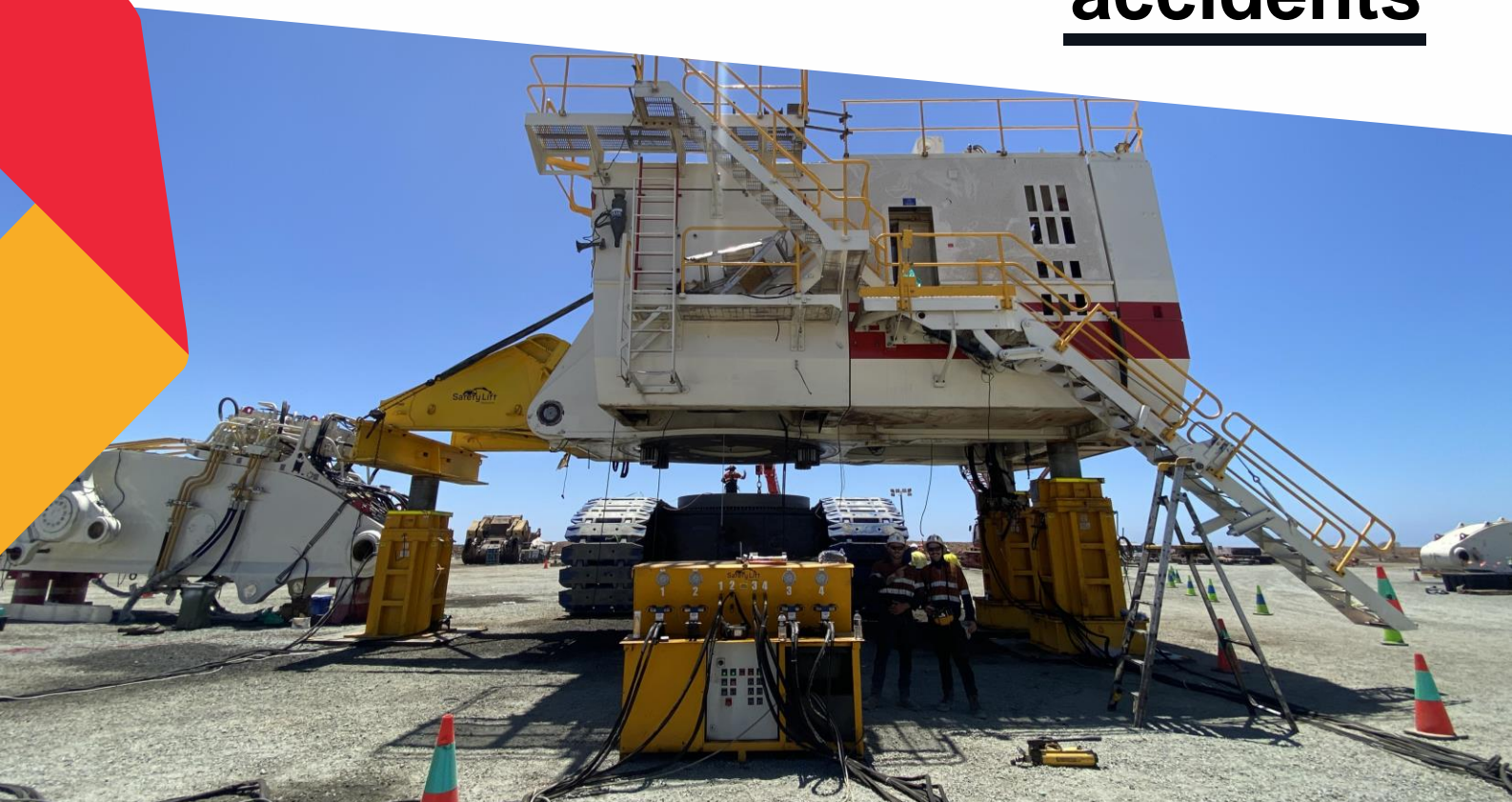
**zero
incidents/
accidents**

SLS and WAFMS was engaged to deliver skilled trade labour, tooling and equipment for a planned major shutdown on MEX004 at CITIC Pacific Mining Sino Iron Project.

PROJECT CHALLENGES

Several unforeseen challenges were encountered on this project that could have caused a major time overrun for CITIC Pacific Mining:

- Additional unexpected work was identified during the inspection phase
- Extra internal cracking in carbody delaying machining
- Personnel being away for long periods of time



THE BEST APPROACH

SLS and WAFMS took a meticulously planned approach to ensure the successful delivery of this major maintenance project. We identified and secured high-quality Supervisors and tradespeople well in advance of project commencement, so that every shift was equipped with the best people. The quality and consistency of our experienced labour achieved impressive efficiencies for our client. Despite inclement weather and emergent work, we were able to reduce time delays and still complete the project within contract.

Our responsiveness meant that the downtime on this major piece of equipment was minimised, ensuring the ongoing productivity of the mine.

40 skilled trade labour delivered to site including:

- Supervisors
- Fitters
- Boilermakers
- Machinists
- Trade Assistants

THE BEST RESULT

- This successful shutdown was executed
- incident free
- All field leadership targets were achieved
- Supervisor alignment sessions meant that all key personnel were well prepared and equipped

“WAFMS are a professional outfit with the customers interest held as the priority to make things happen, no matter the hurdles confronted. I appreciate your critical thinking around this project which allowed it to run seamlessly. To be honest when we started I wasn't convinced it could be pulled off as planned but it was, and this was achieved with quality workmanship and creativity. It's a credit to WAFMS and all involved, from TA's through to Supervision please pass on my sincere appreciation.”

— Graeme Leersen Manager HME, Mining Operations – CITIC Pacific Mining

Delivering the Best to keep your mine running.

To find out how SLS can achieve a result like this for your mine, [contact us](#).

P +61 7 4952 6557
E enquiries@fms-group.com.au



fieldminingservicesgroup
safetyliftsolutions.com.au